

Synchronous Motors

For the Mining Industry



WEG Electric Machinery, WEM, synchronous motors feature rugged designs well-suited for a variety of mining applications.



Ranges

Output: 500 to 15,000 HP
Speed: 180 to 1,800 RPM
Voltage: 2,300 to 13,800 VAC
Power Factor: 0.8 leading to 1.0 unity

Advantages

High Efficiency

Synchronous motors have a unique and merited position as the most efficient electrical drive in the industry and are often 1-2% more efficient than induction motors.

Power Factor Correction

Synchronous motors can operate at leading power factors, providing VARs to the power system, reducing demand charges often caused by induction motors.

Constant Speed

Synchronous motor speed is unaffected by line or load conditions, providing greater operating flexibility. Starting and pull-in torques are designed to accommodate electrical system requirements and load limitations.

Experience

WEM has over a century of experience in designing, manufacturing and servicing large synchronous motors.

Service, Support & Upgrades

- Installation, commissioning and start-up
- Maintenance and field support
- Spares/replacement parts
- Rebuilds and rewinds
- Refurbishment/replacement
- Technical support

Brushless Excitation

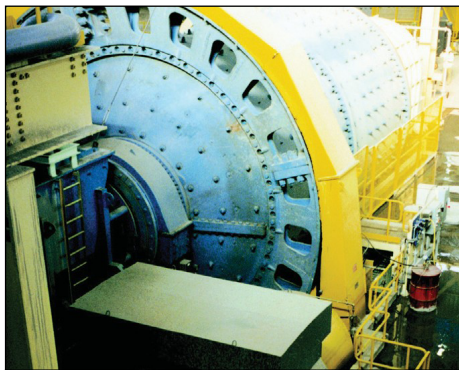
The brushless excitation system eliminates periodic brush and collector ring maintenance and replacement. Solid state excitation components are rated conservatively to provide dependable service and long life. WEM's Sync-Rite™ system applies the field automatically at the proper rotor angle to ensure smooth synchronization.

Application

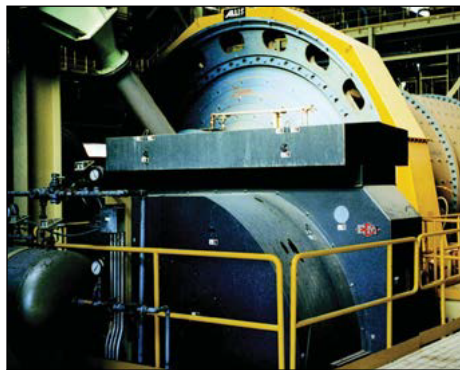
Typical motor applications include SAG and ball mills, crushers, grinders and pumps. WEM motors are suitable for use with variable speed and load sharing applications. For every unique application, WEM works closely with customers through every stage: engineering, software development, manufacturing and training.

Synchronous Motors

For the Mining Industry



Synchronous Motor Driving a Ball Mill



Ball Mill and Motor



Dual Motor Load Shown for Ball Mill

Stator

Stator Construction

The stator is composed of a supporting structure, a core of electrical laminations and insulated windings. High grade silicon steel laminations that build up the core are precision punched from core-plated sheets. Pressed and held between end plates, these laminations are stacked in the support structure and spaced for radial ventilation to ensure even cooling throughout the core. The frame is welded and machined to withstand stresses exerted by electrical and mechanical forces in the core and provide low vibration levels.

Stator Winding Insulation

The Duraguard™ insulation system is a vacuum pressure impregnated epoxy-mica insulation system that provides Class F thermal capability, outstanding dielectric properties, superior moisture and chemical resistance and the superb mechanical integrity of an epoxy resin system. It is a sealed insulation system capable of passing the water immersion test as specified by NEMA MG 1 and IEEE 115. Abrasion-resistant coating is available for protection in demanding environments.

Industry Standards

WEM manufactures synchronous motors to meet all current industry standards including NEMA MG 1, IEEE 115, IEC 60034 and ISO 9001:2000 standards. Motors can be designed to match your existing machines space limitations, shaft heights, and mounting foot locations.

Enclosure

Typical motor enclosures include DPG (IC01/IP22), WP I (IC01/IPW23), WP II (IC01/IPW24), TEWAC (IC817/IP54), and TEAAC (IC611 or IC616/IP54).

Rotor

Rotor Construction

The rotor consists of a spider on which the field poles, amortisseur (cage) windings and brushless exciter armature are mounted. All material used in the coil insulation system will be Class F material. Field coils consist of a copper conductor of rectangular wire or copper strap with each later treated with a suitable filled epoxy resin or aramid fiber.

Rotor Poles

The rotor poles are comprised of steel laminations pressed and bolted together to withstand rotational and electrical stresses and are mounted to the spider rim by bolts, studs or dovetails. The wire-wound poles are then epoxy bonded layer-by-layer to hold the windings firmly.

Rotor Cage Bars

Phosphorous-free brazing of cage bars prevents chemical corrosion which can cause machine failure.

Rotor Shaft

The shaft will be forged steel or rolled steel, accurately machined and smoothly finished where required.

For more information, please contact:

E-mail: service-em@weg.net

Phone: 24 Hour Customer Support: +1 (612) 247-9232



Transforming Energy into Solutions www.weg.net/us

ELECTRIC MACHINERY COMPANY

800 Central Avenue NE
Minneapolis, MN 55413
United States
Tel: +1 (612) 378-8000
Fax: +1 (612) 378-8051

www.electricmachinery.com